

Instruction for modification EGIS-controller to S-DRIVE-Controller

Basic conditions:

Machine-Type: TTE 1100
No change of harness necessary

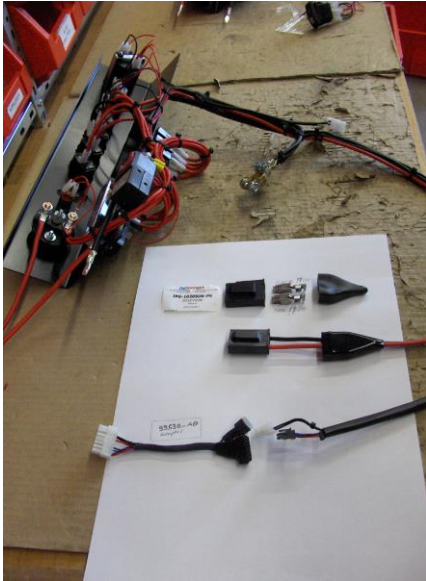
Please do step by step:

1. Separate the main power supply by releasing and isolating the (+) connecting clamp from the accumulator.
2. Change the power connector of the harness at the interface: operation board to controller-device.
3. Adjoin the adapter at the interface of the controller cable to the controller-device.
4. Change the power connector of the harness at the interface: controller to the driving engine of the machine.
5. Exchange the controller device (without picture).

The modification kit contains the following pieces:

<u>Art.-No.</u>	<u>Description</u>
104000	connector
104001	connector
104044	adapter
113151	S-DRIVE-controller
103999	Sealing kit modification instruction

1. Separate the main power supply by releasing and isolating the (+) connecting clamp from the accumulator.
2. Change the power connector of the harness at the interface: operation board to controller-device.
3. Adjoin the adapter at the interface of the controller cable to the controller-device.

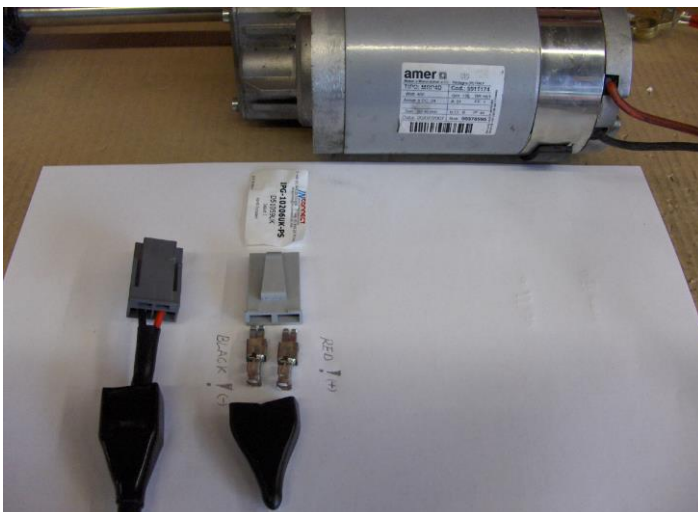


Picture A: interface: operation board to controller device and adapter.
Attention: Please look for the right colours!

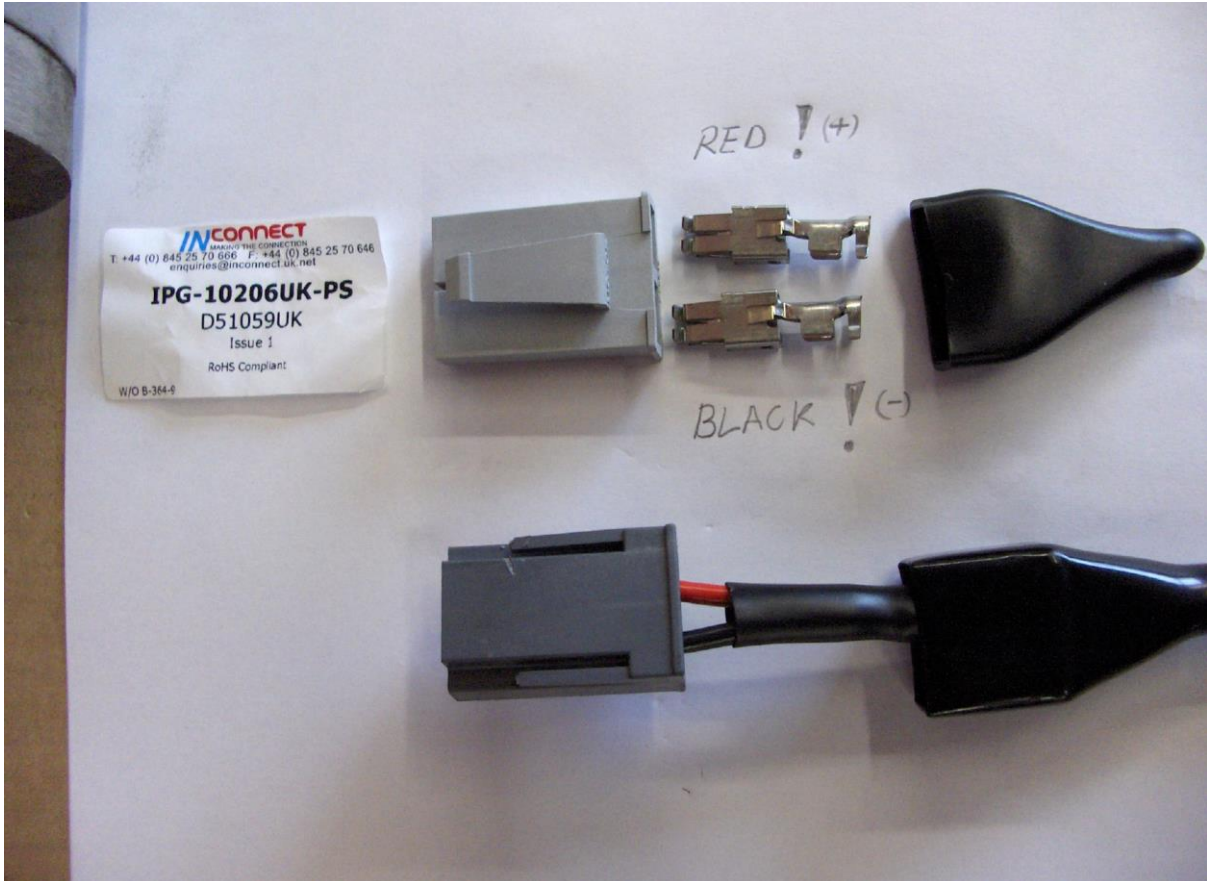


Picture B: Attention: Please look for the right colours!

4. Change the power connector of the harness at the interface: controller to the driving engine of the machine.

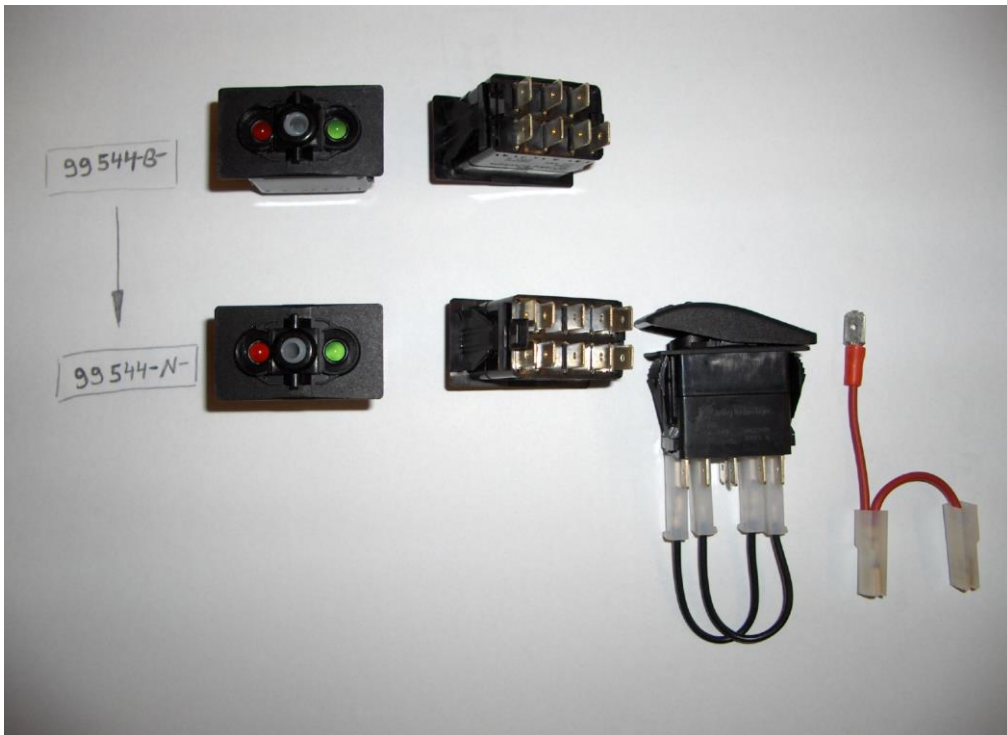


Picture C: Power connector interface: controller to the driving engine.

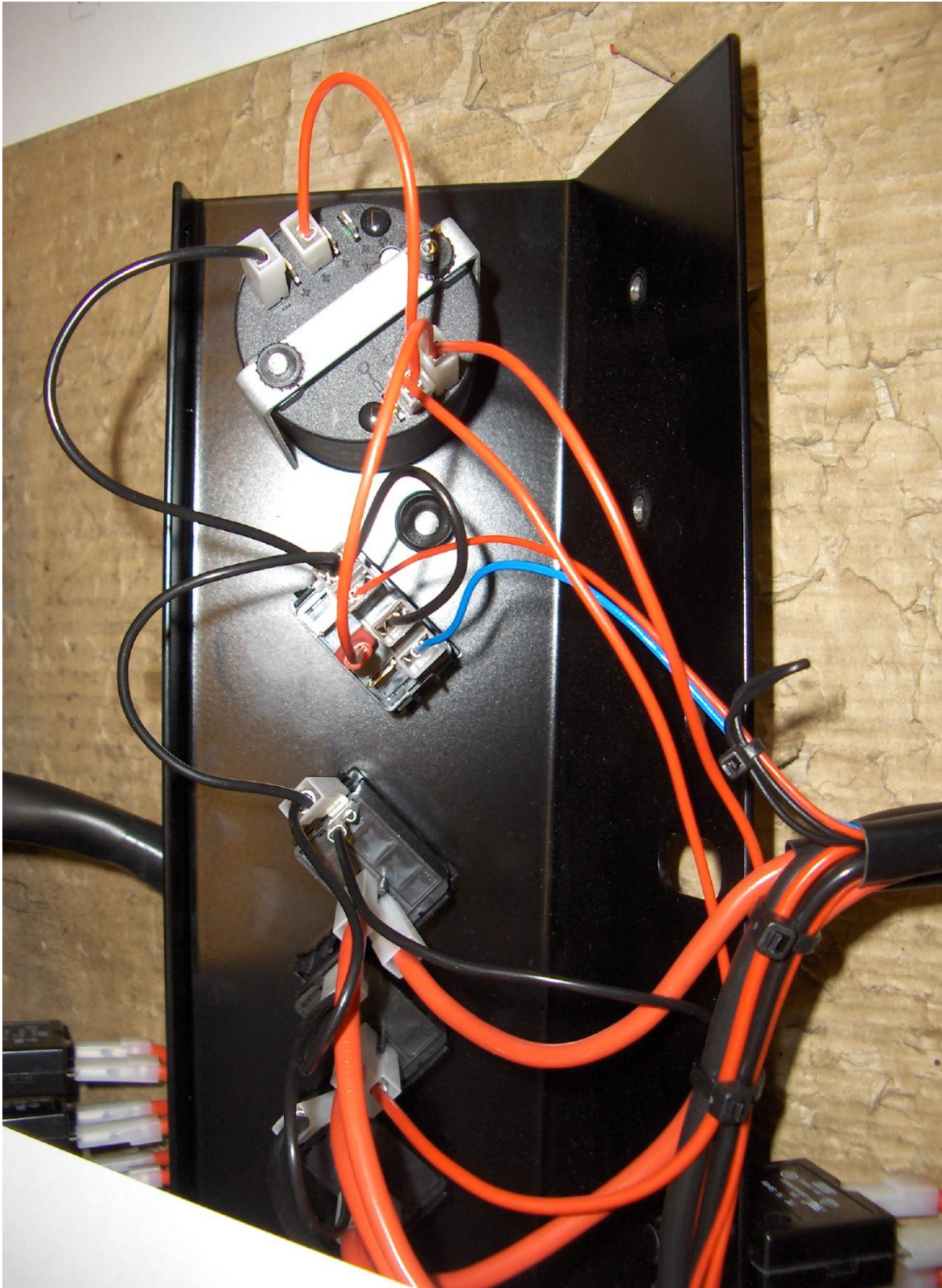


Picture D: Attention: Please look after the right colours!

5. Change the driving direction switch on the operation board.



Picture E: Driving switch for EGIS controller (has 3 clinch positions), Art.-Nr. 99544-B-
driving switch for S-DRIVE controller (has 2 clinch positions), Art.-Nr. 99544-N-
cable jumper



Pic. F: Wiring for EGIS-Controller



Pic G: Wiring for S-DRIVE-Controller. Blue wire is not needed any more and so is fixed with cable ties directly at the harness.

5. Change of wiring to main fuse for the controller from switched (+) to permanent (+) on switch 99536.

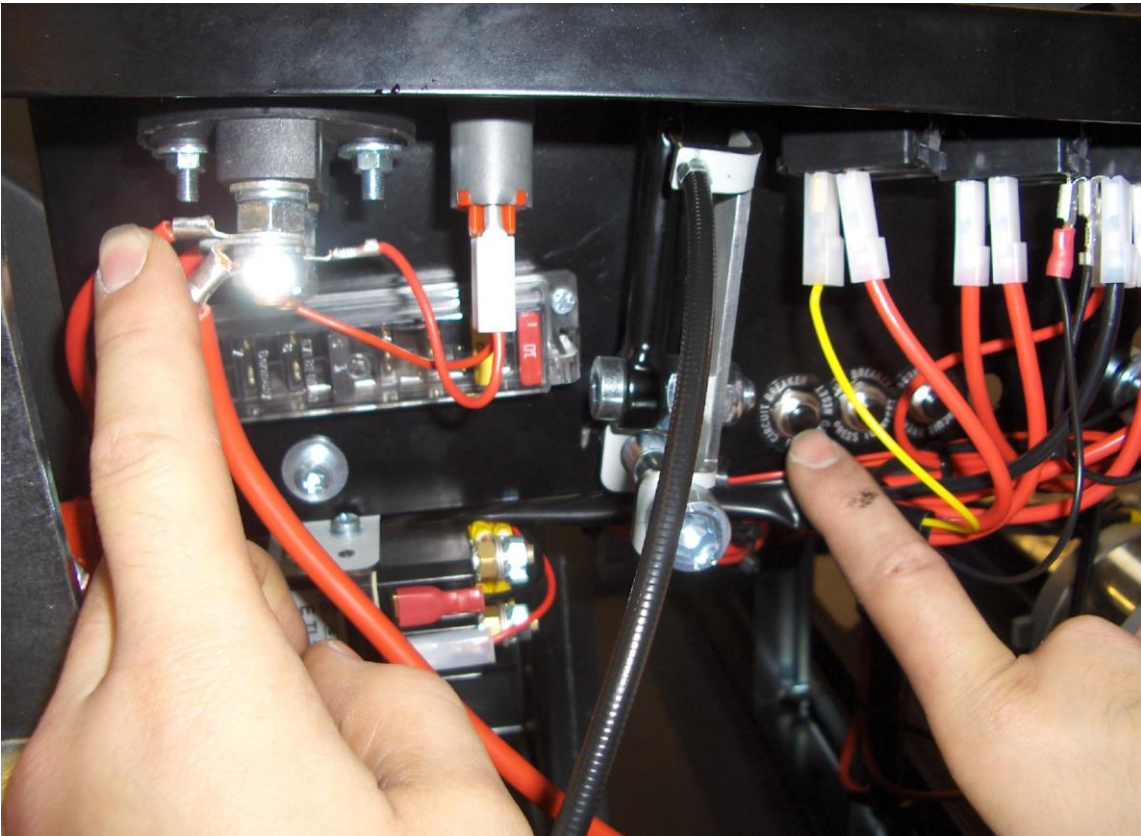


Bild H: Doppelbild: Umklemmen der Verbindung: Hauptsicherung des controllers für S-DRIVE

For S-DRIVE controlling change (+) connection of the main fuse at the switch 99536 from (+) to (+ permanent)! Use same wire. No additional wire is needed!